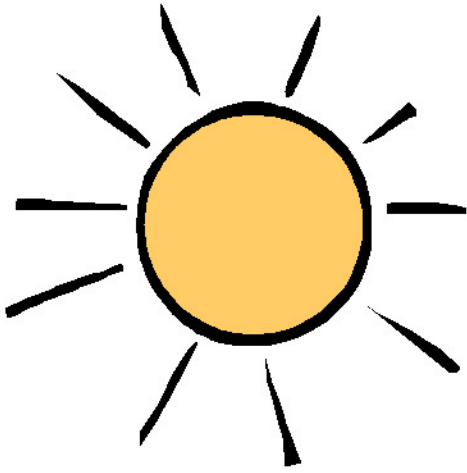


Community Academy for Summer Enrichment Sessions

"Education · Fun · Recreation"

Two Summer Exposure Camps



***C.A.S.E.S. Day Camp K-5th**
***SW Teen Camp 6th - 8th**

Camp Activities

Daily academic instruction, diagnostic testing in math-reading-writing skills, workbooks are provided in tested areas, arts and crafts, club time, fun field trips, social development/mentor activities for teens, and much more.
Meals – breakfast, hot lunch, and snacks are served.

Registration

Early Registration - Saturdays April 14th & 21st 2012, 10am -3pm
Saturdays 10am-2pm beginning May 5, 2012 and Monday-Friday 6pm-8pm
Once camp starts June 4th registration continues Monday - Friday 7am - 6pm

Cost

Non-refundable one time registration fee \$55
C.A.S.E.S. Summer Day Camp \$85 per week
SW Teen Camp \$90 per week
Weekly fees based on a sliding fee scale- and CAPS accepted

2012 Summer Exposure Camps Schedule - July 4, 2012 No Camp

Days of Operation/Hours- Monday-Friday 7:00am - 6:00pm
1st Session - June 4th - June 15th, 2nd Session - June 18th - June 29th
3rd Session - July 2nd - July 13th, 4th Session - July 16th - July 27th
5th Session - July 30th - August 3rd includes Sports & Arts & Crafts Camp

Location

All registration/camp activities are held at New Life Presbyterian Church
6600 Old National Highway, College Park, Ga 30349
Contact Number 404-713-2958

A Community Response to Community Needs